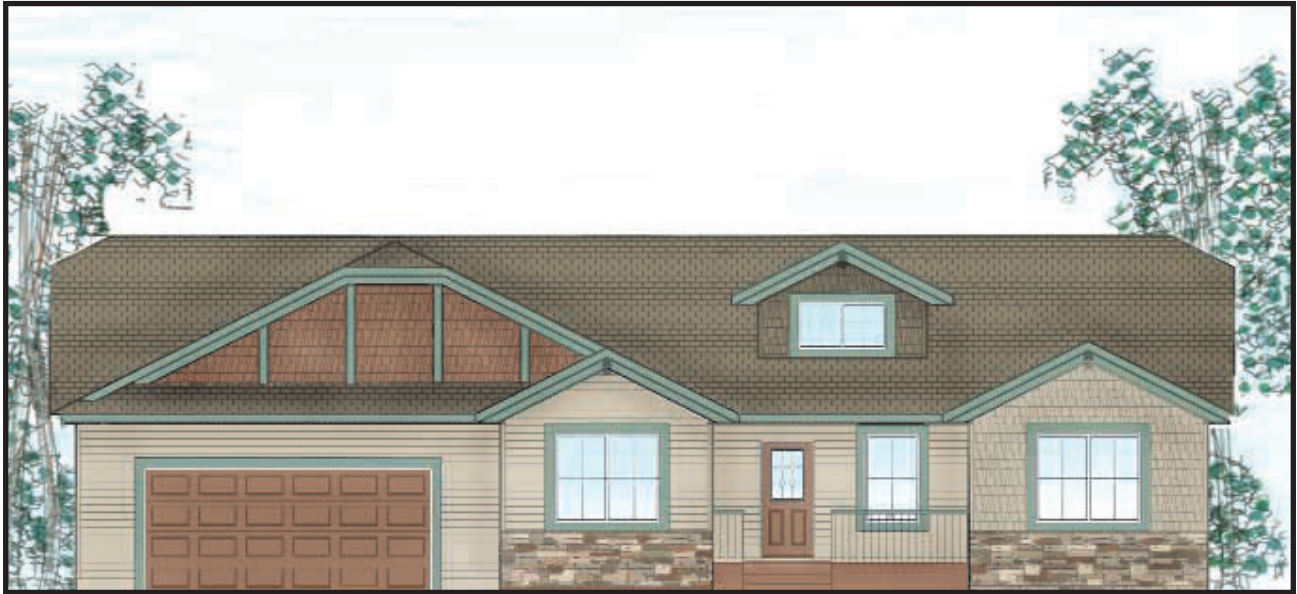




The CRAFTSMAN



Experience the character and quality of a Westcraft Home in...



a custom designed neighborhood in northwest Kalispell where master craftsmanship and distinctive designs combine with the splendor of Montana to create an unsurpassed lifestyle. The Craftsman residence in Northland has been built with unique features and unmatched attention to detail. This ranch-style home boasts an expansive great room with vaulted ceilings, an open and efficient kitchen with corner pantry, magnificent master suite, and plenty of storage.

Ranch-style home with basement

2810 • 4 BR • 2.5 baths • dbl garage

MAIN FLOOR

2 bedrooms, 1.5 baths, kitchen and great room with vaulted ceiling, laundry

FINISHED BASEMENT OPTION

2 bedrooms, 1 bath, family room, bonus/theatre room, storage room

FOR MORE INFORMATION CONTACT:

Galko Homes Montana

PO Box 1117

Whitefish, MT 59937

406-862-3300 office

info@galkomontana.com



www.galkomontana.com

